



Guide with confidence

Molecular Imaging Localization System

Available on Discovery™ NM750b

GE Healthcare's **Discovery NM750b
Molecular Imaging Localization System**

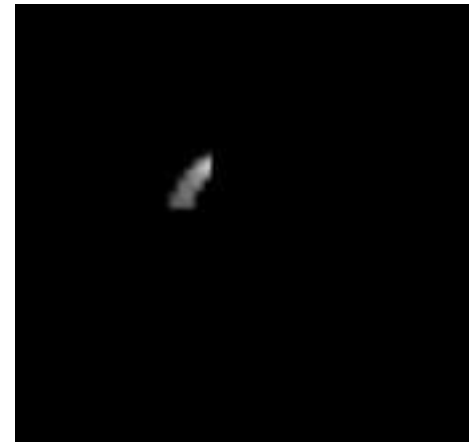
enables 3D molecular-guided biopsy of suspicious lesions in the breast.

The Molecular Imaging Localization System is an easily incorporated accessory to the Discovery NM750b system. Thanks to the NM750b image quality and stereotactic localization technology, lesions are accurately located with confidence.

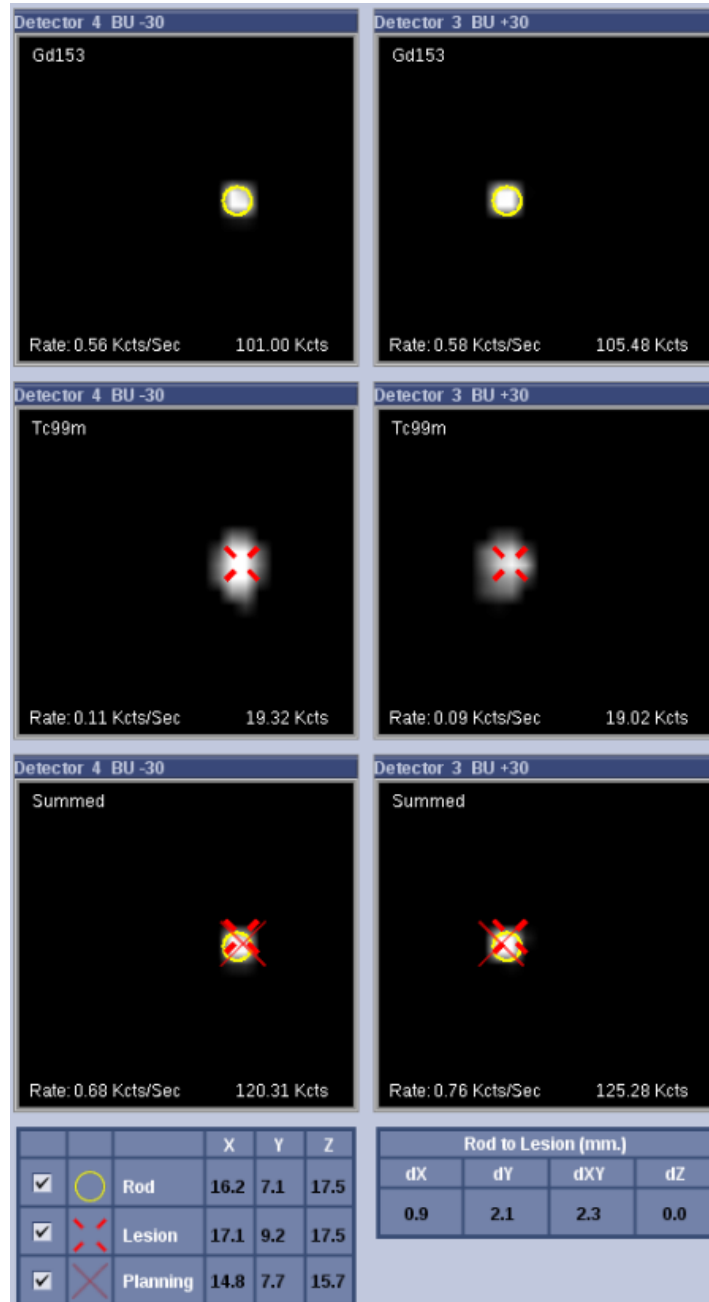


DELIVERING CLINICAL CONFIDENCE

- Allows CC, MLO and lateral approach for shortest skin-to-lesion distance
- Allows both vertical and lateral approach to optimize access and patient comfort
- Compatible with most common biopsy devices*
- Allows access to lesions with 360° access to the breast
- Semi-automated application minimizes the need of user calculations
- Verification of lesion X-Y location is conducted prior to any invasive procedure
- Visual and quantitative information enables verification prior to tissue sampling
- Specimen imaging can be done while patient is in position or after release



Specimen image



Verification screen

PROVIDING EXPANDED PERFORMANCE

The 'all-in-one' solution that switches from Diagnosis to stereotactic

- Switch easily from diagnosis to stereotactic, allowing a quick non-surgical biopsy, which helps to determine patient follow-up without the need for additional hospitalization
- Average localization exam time per patient is approximately 30 minutes
- Pre-programmed user interface directs the user with detailed step by step instructions
- The advanced software allows optimization of the procedure time
- The Quality Control and Calibration procedure are streamlined and intuitive
- The system is designed for efficient draping and cleaning

DEFINING PATIENT EXPERIENCE

- Reduce patient anxiety from diagnostic to interventional imaging due to the compact design of the system
- The open design eliminates claustrophobia
- Allows sitting and decubitus positions, the patient in lateral decubitus position is not subject to vagal episodes
- Biopsy procedure may be performed without additional radiopharmaceutical injection or with an injected activity less than what would be needed when the activity is no longer present**

DEFINING OPERATOR EXPERIENCE

- Provide streamlined and simplified setting of the system
- Designed for accessible and efficient cleaning, with disposable sterilized kits
- Stereotactic imaging mimics Mammography biopsy flow
- Flexible biopsy approach allows large accessible biopsy volume and optimal access route to the lesion
- Compatible with common, commercially available vacuum assisted devices



Disposable sterilized kit items



Imagination at work

*(Mammotome® MI/115m 8G, EnCor® MRI; BARD 7G and 10G, ATEC® 0914-0MR; Hologic 9G)

**Only in cases where the clinical practice, patient management and radiologist availability are coordinated.

Product may not be available in all countries and regions. Contact a GE Healthcare Representative for more information.

© 2017 General Electric Company – All rights reserved. August 2017/DOC1822904 Rev 1

GE Healthcare reserves the right to make changes in specifications and features shown herein, or discontinue the product described at any time without notice or obligation. Contact your GE Healthcare representative for the most current information. GE and the GE Monogram, and Discovery are trademarks of General Electric Company. GE Healthcare, a division of General Electric Company. GE Medical Systems, Inc., doing business as GE Healthcare.

JB50588XX